

# Lucky Items



[Venugopala \(Fluting Krishna with His Cow\)](#)



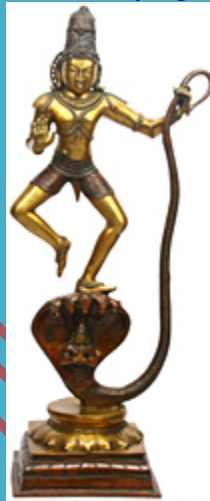
[Dancing Saraswati with Peacock and Floral Aureole](#)



Radha Krishna



Lord Ganesha Playing the Flute



Lord Krishna Vanquishes Kaliya



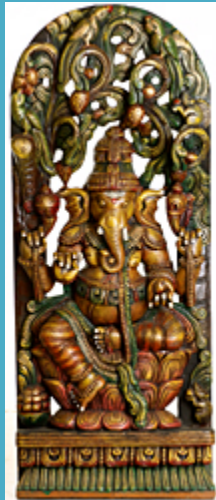
Four-Armed Seated Ganesha



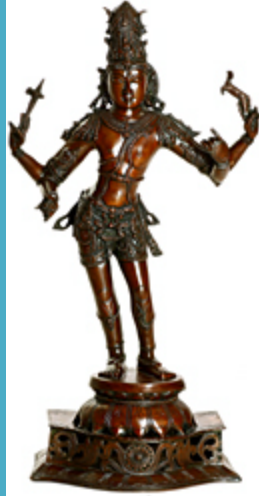
[Goddess Mariamman](#)



[Rudra Tandava](#)



[Lord Ganesha Seated in Lalitasana in the Backdrop of Floral Arch Aureole](#)



[Lord Shiva as Pashupatinath](#)



[Goddess White Tara - Protects from Danger, Distress and Bestows a Long Life on Her Devotees](#)



[Pancha-Mukha Ganesha](#)



[Radha Krishna](#)



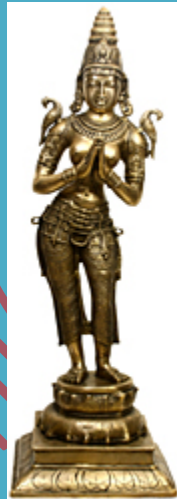
[Dashavatara Panel \(Ten Incarnations of Shri Vishnu\)\(From the Left - Doorkeeper, Matshya, Kurma, Varaha, Narasimha, Vaman, Parashurama, Rama, Balarama, Krishna, Kalki and Doorkeeper\)](#)



[Dancing Ganesha](#)



Nirvana Buddha Under the Tree of Life



The Dwara-Devi (The Celestial Doorkeeper Flanking Temple Doors)



Anandatandava of Lord Shiva





[His Majesty Lord Ganesha at Leisure](#)



[Buddha Calling The Earth to be His Witness](#)



[Nataraja \(Super Large Sculpture\)](#)



[Nataraja in Tanjavur Idiom](#)



[Lord Buddha Preaching Law of Dharma](#)



[Lord Ganesha Dancing on His Rat](#)

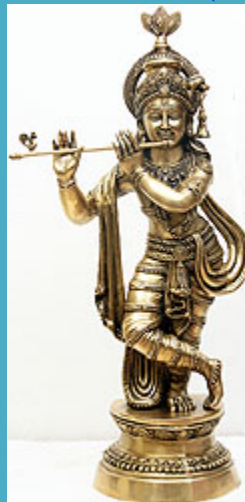




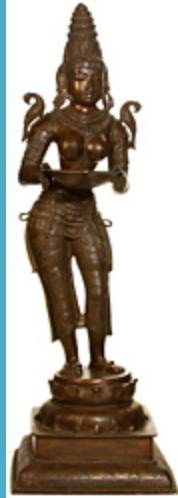
[The Savior Goddess Green Tara](#)



[Devi Lakshmi as Padmavati \(Lotus Goddess\)](#)



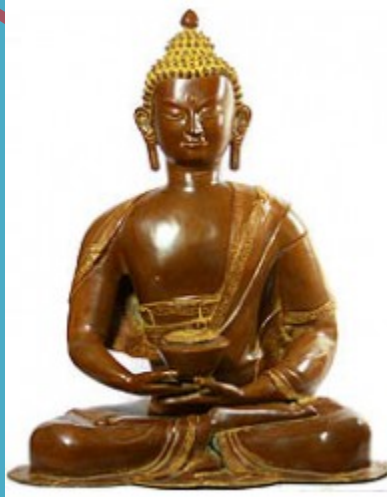
[Fluting Krishna](#)



[Deeplakshmi](#)



[Rudra Tandava \(Dancing Siva\)](#)



[The Yoga-murti Buddha](#)



[Celestial Nymph Playing on Vina](#)



[Deepalakshmi as the Model of Supreme Beauty](#)



[Hanuman Carrying Mount Dron](#)



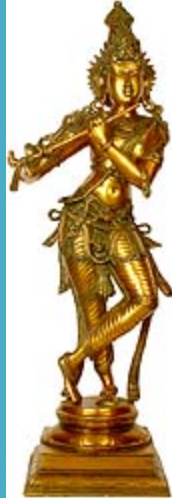
[Looking into Mirror](#)



[Flute-Playing Krishna](#)



[Goddess White Tara with Seven Eyes](#)



Lord Krishna



Mahakali, or Kali



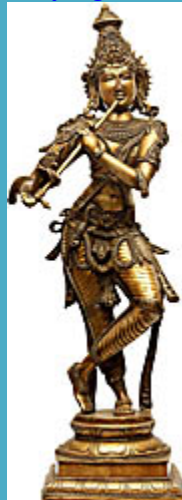
Buddha's Bust in Wood



[Four-Armed Avalokiteshvara](#)



[Radharani Carrying Milk for Krishna](#)



[Krishna in 'Tri-bhang' Aspect](#)





Kamalasana – Lotus-Seated Saraswati



Warrior Ganesha



Lord Vishnu



[The Dancing Yakshi](#)



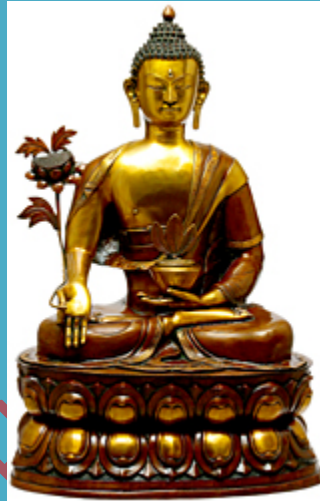
[Saraswati](#)



[Buddha in 'Abhaya' Granting Posture](#)



[Lord Shiva as Nataraja](#)



[Finest Physician The World Has Ever Seen](#)



[Trimukha Ganesha](#)



[Four Armed Standing Ganesha with Short Dhoti](#)



[The Ideal Body? \(And Mind\)](#)



[Dakshinamurti Shiva](#)



[Chenrezig \(Shadakshari Lokeshvara\)](#)



[The Auspicious Mahakala Mask](#)



[Nataraja \(Large Sculpture\)](#)



Ganesh, The Master of Music



Kamalasana Saraswati Enshrining Prabhavali



The Kathakali Dancer





[The Dancing Nymph](#)



[Celestial Dancer Putting on Bells on Feet](#)



[Vishnu and Lakshmi](#)



[Durga in Ferocious Form Subduing Apasmara](#)



[Shiva The Archer](#)



[Simha Ganesha](#)



[Chenrezig \(Shadakshari Avalokiteshvara\)](#)



[Padmasambhava - The Second Buddha](#)



[Mahishasura Mardini](#)



The Ever Conflicting Elements - Awe and Beauty



Chaturbhuja Shri Vishnu



Buddha, The Universal Teacher



[Ten-Armed Black Kali, or Mahakali](#)



[Lord Vishnu Bust](#)



[The Goddess of Prosperity](#)



[Buddha Shielded by Muchalinda](#)



[South Indian Goddess Mariamman](#)



[Shri Krishna Vanquishes Kaliya](#)





[Ardhanarishvara \(Shiva Shakti\)](#)



[Ganesha - The Son of Nataraja](#)



[The Dwara-Devi \(The Celestial Doorkeeper Flanking Temple Doors\)](#)



[Goddess Green Tara](#)



[Yuddha Ganesha](#)



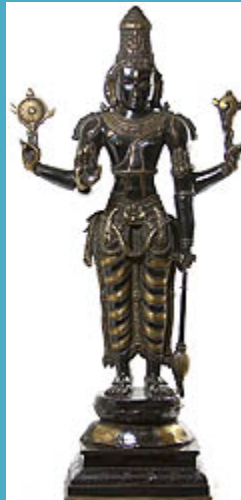
[Nataraja - King of Dancers](#)



[Vijayanagara Deeplakshmi](#)



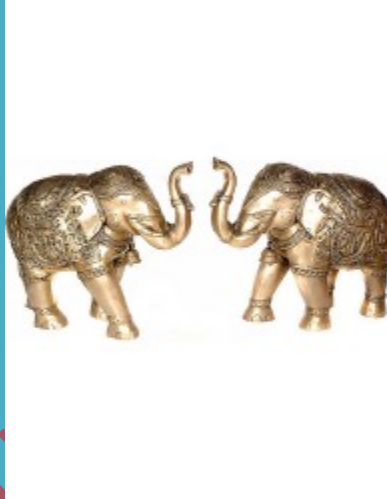
[Mother Goddess Durga](#)



[Lord Vishnu: The Cosmic Commander](#)



[The Dwara-Devi \(The Celestial Doorkeeper Flanking Temple Doors\)](#)



[An Extremely Auspicious Pair](#)



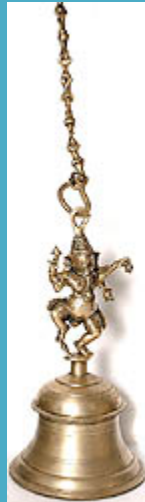
[A Majestic, Calm Disdain \(For All Things Material\)](#)



[Shadakshari Lokeshvara \(Chenrezig\)](#)



[Why is Krishna Black?](#)



[Auspicious Ganapati-Bell](#)



[Nataraja \(Super Large Sculpture\)](#)



[Vina-Vadini Saraswati](#)



[Deeplakshmi - An Icon of Auspiciousness](#)





[Devi Parvati Offering a Flower to Lord Shiva](#)



[The Buddha Head](#)



[An Emotional Composition of Love](#)



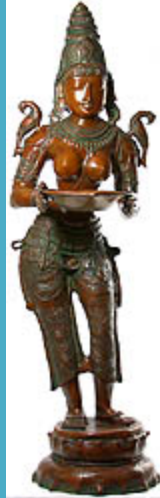
[Venu Gopal: The Enrapt Player of Flute](#)



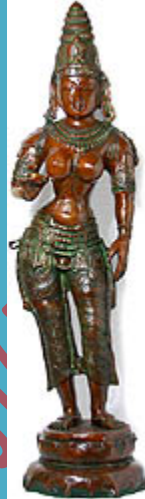
[The Dwara-Devi \(The Celestial Doorkeeper Flanking Temple Doors\)](#)



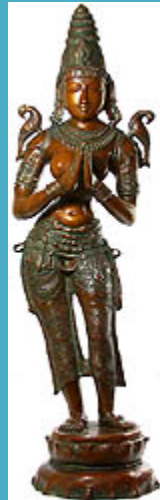
[Padmahasta Lakshmi](#)



[Deeplakshmi](#)



[Goddess Parvati](#)



[The Dwara-Devi \(The Celestial Doorkeeper Flanking Temple Doors\)](#)



[Four-Armed Blessing Lakshmi](#)



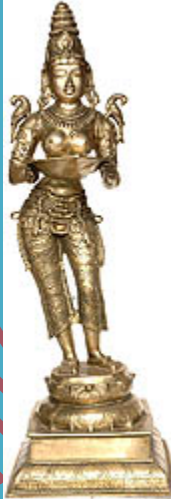
[Krishna Playing on Flute](#)



[Standing Avalokiteshvara](#)



[Deep Lakshmi](#)



[Deeplakshmi](#)



[Goddess Mahakali](#)



[Chenrezig \(Shadakshari Lokeshvara\)](#)



[Fluting Krishna with Cow and Peacock](#)



[Goddess Lakshmi](#)





[Saraswati: Goddess of Knowledge and Art](#)



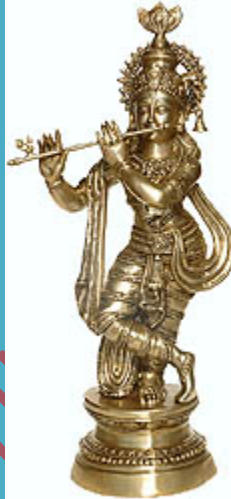
[Venugopala \(A Fine Art Work\)](#)



[Head of Lord Shiva with Crescent Moon and River Ganga](#)



[Nataraja Dancing the Backdrop of OM](#)



[Krishna Playing the Flute](#)



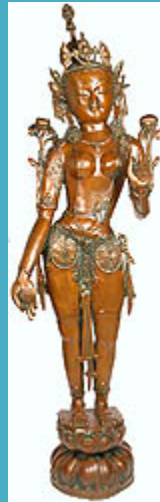
[Nataraja - The King of Dancers](#)



[Goddess Lakshmi](#)



[Namaste Tara](#)



[Standing Goddess Tara](#)



[Chenrezig \(Shadakshari Lokeshvara\)](#)



[Manjushri, Buddhist God of Wisdom](#)



[Lord Krishna as Shyam \(Black\) Sundar \(Beauty\)](#)



Nataraja - The Cosmic Dancer



Fluting Krishna



The Only Place Which Could Have Withstood the Great Impact of Buddha's Samadhi....



[Lord Shiva](#)



[Mahaparinirvana Buddha](#)



[Goddess White Tara](#)





[The Buddha Who Grants Succor From Both Spiritual and Physical Sickness](#)



[Ardhanarishvara](#)



[Chenresig, or the Four-Armed Avalokiteshvara](#)



[Nataraja](#)



[Manjushri - Bodhisattva of Transcendent Wisdom](#)



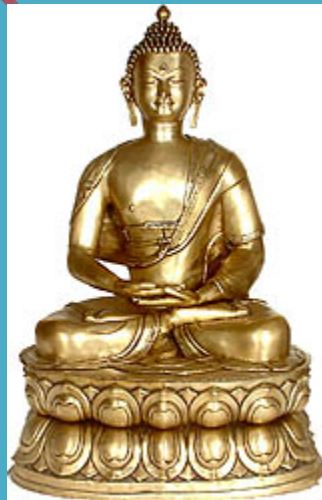
[Four-Armed Avalokiteshvara](#)



[Medicine Buddha](#)



[Devi: The Manifestation of Primordial Female Energy](#)



[Buddha in Dhyana Mudra](#)



[The Divine Dancer Nataraja](#)



[The Dance of Victory](#)



[Nataraja](#)



[Radha Krishna Under the Kadamba Tree](#)



[Mahayogi Shiva](#)



[Lord Vishnu](#)





[Crowned Buddha \(Sambhogakaya\)](#)



[Auspicious Ganesha-Bell](#)



[Segan Semui-in](#)





[Goddess Saraswati Seated on Swan](#)



[Blessing Buddha](#)



[Sheshshayi Vishnu](#)



[Chenresig The Four-Armed Avalokiteshvara](#)



[Deeplakshmi](#)



[Manjushri, Buddhist God of Wisdom](#)



[An Auspicious Motif Aimed at Bringing Prosperity and Riches](#)



[Nataraja](#)



[Vishnu, In His Own Words](#)



[Walking Buddha](#)



[Medicine Buddha](#)



[Buddha in Bhumisparsha Mudra](#)



[Four-Armed Avalokiteshvara](#)



[Green Tara](#)



[Nataraja](#)



[Meditating Buddha](#)



[Pritzker Vairochana Buddha](#)



[The Goddess Lakshmi](#)





[Fluting Krishna](#)



[Goddess Kali](#)



[Crowned Buddha](#)



[The Buddha Blesses](#)



[Goddess Kali](#)



[Sheshshayi Vishnu](#)



[Buddha Under the Bodhi Tree](#)



[Lord Krishna](#)



[Lord Buddha in Meditation](#)



Goddess Lakshmi as Padmavati



Nataraja



Ardhanarishvara : The Half Male and Half Female Form of Shiva



[Namaste Lady](#)



[Lord Krishna](#)



[Green Tara](#)



[Lord Krishna](#)



[The Paradox of Eternity and Time](#)



[Lord Hanuman](#)





[Apsara with Veena](#)



[Buddha on Double Lotus Pedestal](#)



[Mukhalingam](#)



[The Goddess Tara](#)



[Standing Tara](#)



[Ganesha](#)



[Lord Shiva](#)



[Crowned Buddha in the Dhyana Mudra](#)



[Ardhanarishvara](#)



[Mother Goddess Durga](#)



[Dhyana Buddha](#)



[Lord Shiva](#)



[Krishna](#)



[The Four-Armed Avalokiteshvara](#)



[Goddess Saraswati](#)



[Nepalese Temple Lions](#)



[Buddha in the Abhaya Mudra](#)



[Krishna Fluting](#)





Ganesha The Spiritual Warrior



Nataraja



Green Tara



[Ardhanarishvara : The Half Male and Half Female Form of Shiva](#)



[Padmasambhava](#)



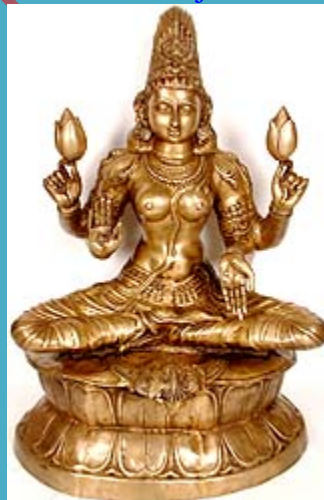
[Ganesha](#)



[Camel, The Ship of Desert](#)



[Nataraja](#)



[Padmahasta Lakshmi](#)



[Lord Vishnu](#)



[Buddha Calling The Earth to be His Witness](#)



[The Auspicious Image of Deepalakshmi](#)



[Meditating Buddha](#)



[Goddess Lakshmi](#)



[Deep Lakshmi](#)





[Ganesha, The Blissful God of Auspices](#)



[Meditating Shiva](#)



[Nataraja](#)





[Deep Lakshmi](#)



[Saraswati, The Goddess of Three-Fold Knowledge](#)



[Crowned Buddha](#)



[Nataraja](#)



[Gandhara Buddha](#)



[Ten-Armed Black Kali, or Mahakali](#)



Hansarooda Veena- vadini (A Masterpiece)



Lord Buddha



Deep Lakshmi



[Nataraja](#)



[Devi: The Manifestation of Primordial Female Energy](#)



[Nataraja](#)



Crowned Buddha

DR. RUPNATHJI (DR. RUPAK NATH)